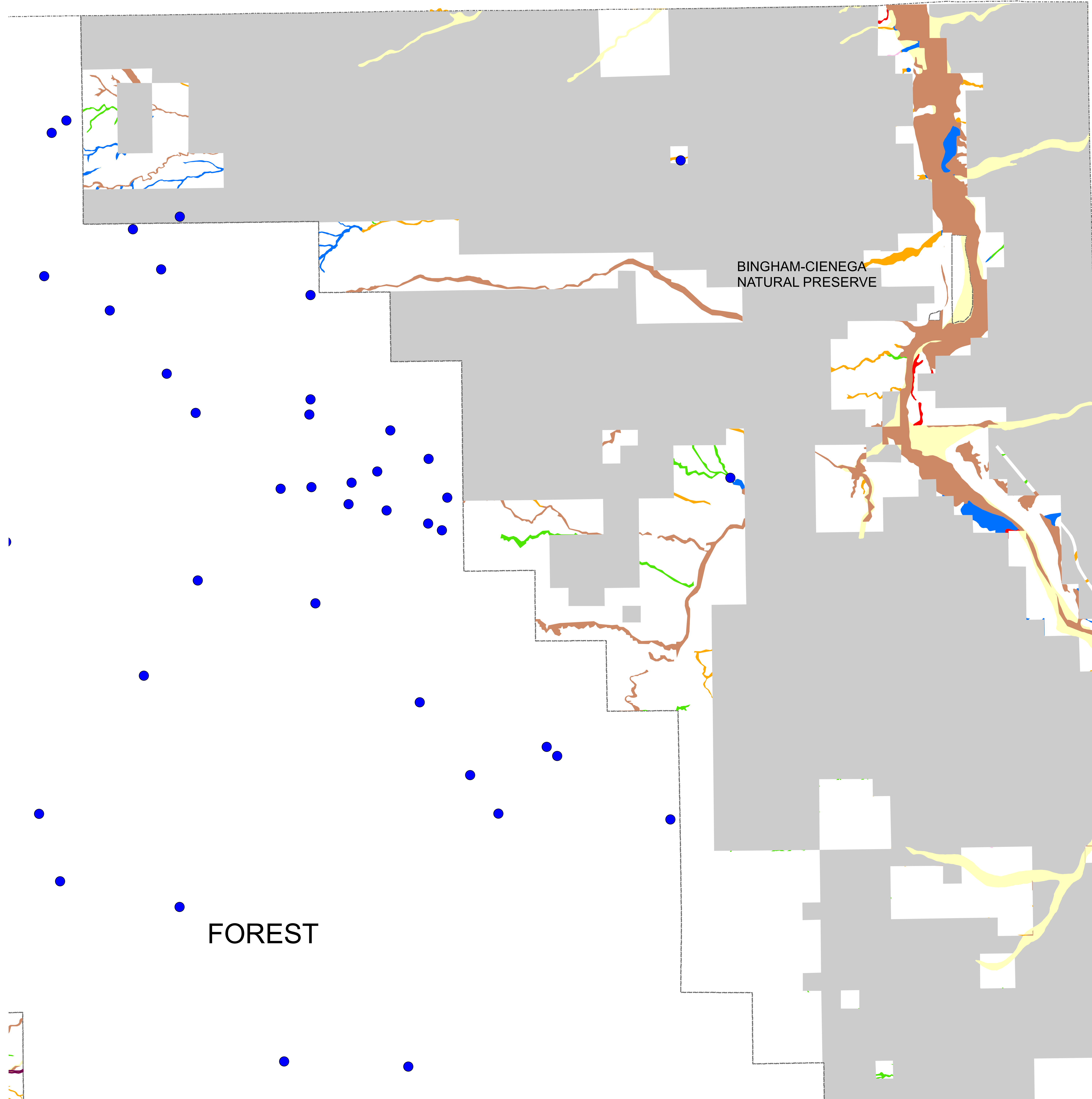


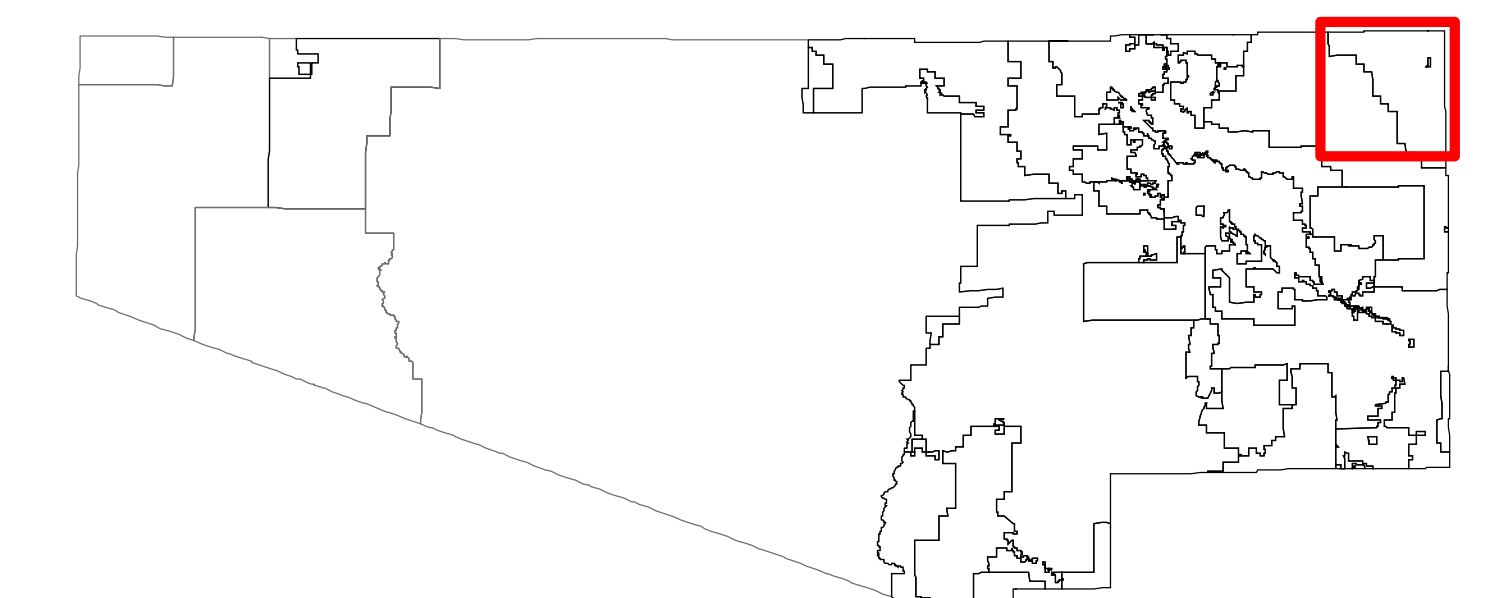
Floodway and FEMA Floodplain and Proposed Regulated Riparian Classifications on Private Property



- Administrative Boundaries
- Highways
- State Owned Property
- Floodway
- Federally mapped FEMA floodplains
- CLASS**
- Important Riparian Areas
- Hydroriparian or mesoriparian
- Xeroriparian A
- Xeroriparian B
- Xeroriparian C
- Xeroriparian D - not regulated
- Springs

Map area covers: San Pedro River

Pima County Index Map



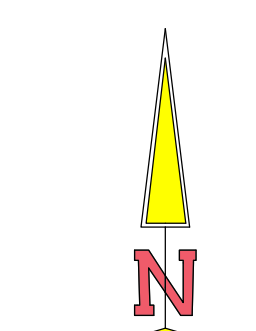
Index Map Scale 1:1,500,000

The information depicted on this display is the result of digital analyses performed on a variety of databases provided and maintained by several governmental agencies. The accuracy of the information presented is limited to the collective accuracy of these databases on the date of the analysis. The Pima County Department of Transportation Technical Services Division makes no claims regarding the accuracy of the information depicted herein.

This product is subject to the Department of Transportation Technical Services Division's Use Restriction Agreement.



Pima County Technical Services
 201 North Stone Avenue - 9th Floor
 Tucson, Arizona 85701-1207
 (520)740-6670 - FAX:(520)798-3429
<http://www.dot.co.pima.az.us>



Scale 1:32,000

